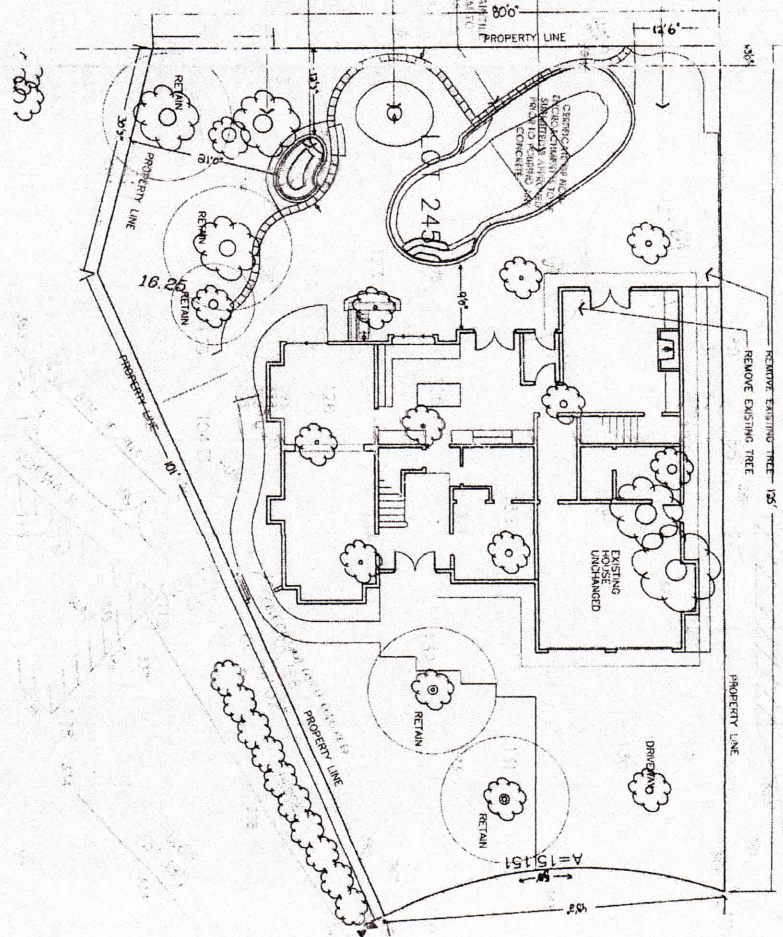


POOL DECK
 POOL DECK TO BE
 1/4" SLAB ON 4" CONC. SLAB
 REINFORCED WITH 3/8" OVER
 REINFORCING BARS AT 12" ON CENTER
 7

POOL
 FINISH: STAINLESS STEEL
 SANITATION: SANITIZER
 MANUFACTURER'S SPECIFICATIONS
 AND ALL APPLICABLE LOCAL CODES
 FINISH: 1/2" RIBBED CONCRETE
 F. JOCK WALL

REINFORCING BARS
 1/2" RIBBED CONCRETE FOOTING
 1/2" RIBBED CONCRETE MASONRY UNITS
 1/2" RIBBED CONCRETE VENEER AND
 1/2" RIBBED CONCRETE
 FINISH: 1/2" RIBBED CONCRETE
 FINISH: 1/2" RIBBED CONCRETE
 FINISH: 1/2" RIBBED CONCRETE
 FINISH: 1/2" RIBBED CONCRETE

NOTE & DATA



Oceanic Pools Corporation
 San Juan Pool and Spa Installation
 4301 - 1530 56th St.
 Delta B.C. V4L 2A8
 604-948-0884
 Contact Dave for TR-269-0080
 Feb 29, 2008

1 SITE PLAN
 SCALE 1/8" = 1'-0"

DATE: FEB 29, 2008
 PROJECT: BR/06514
 DRAWN BY: [Name]
 CHECKED BY: [Name]

A-1

SITE PLAN

LOTTER RESIDE:
 POOL ADDITION
 8737TH AVE
 DELTA, B.C.



Notes:
 - See plan for pool deck location
 - Pool deck to be 1/4" slab on 4" concrete slab
 - Reinforced with 3/8" over reinforcing bars at 12" on center
 - Pool finish: stainless steel
 - Sanitation: sanitizer
 - Manufacturer's specifications and all applicable local codes
 - Pool deck finish: 1/2" ribbed concrete
 - Pool deck masonry units: 1/2" ribbed concrete
 - Pool deck veneer and: 1/2" ribbed concrete
 - Pool deck finish: 1/2" ribbed concrete

10

CUL-DE-SAC